



Image from Google Earth

**\$5,500/MO
FOR LEASE**

2512 NORWOOD ST SW LENOIR, NC

Available Winter 2024, this spacious industrial-zoned building is perfect for businesses seeking functionality and convenience. The property features a large drive-in door (10'x12') and a dock-height loading platform, facilitating easy access for deliveries. With a total area of approximately 14,866 square feet, it includes 5,982 square feet of well-appointed, conditioned office space. Complete with a break room and 8,884 square feet of versatile warehouse/storage.

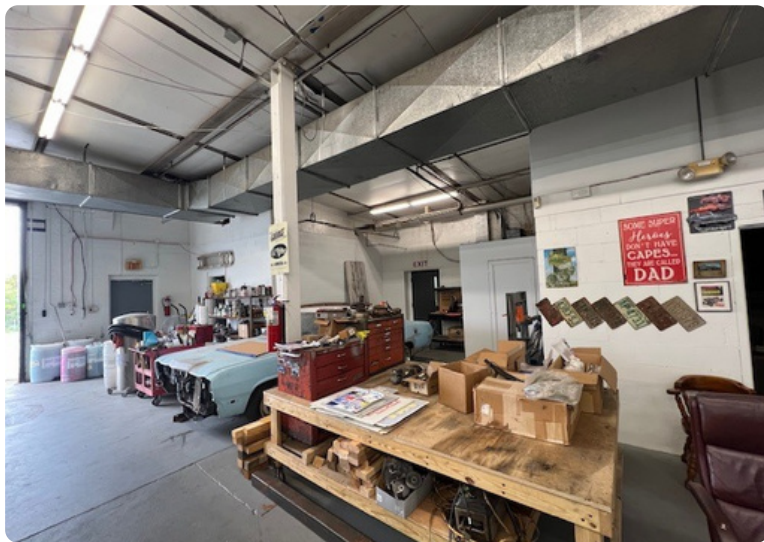
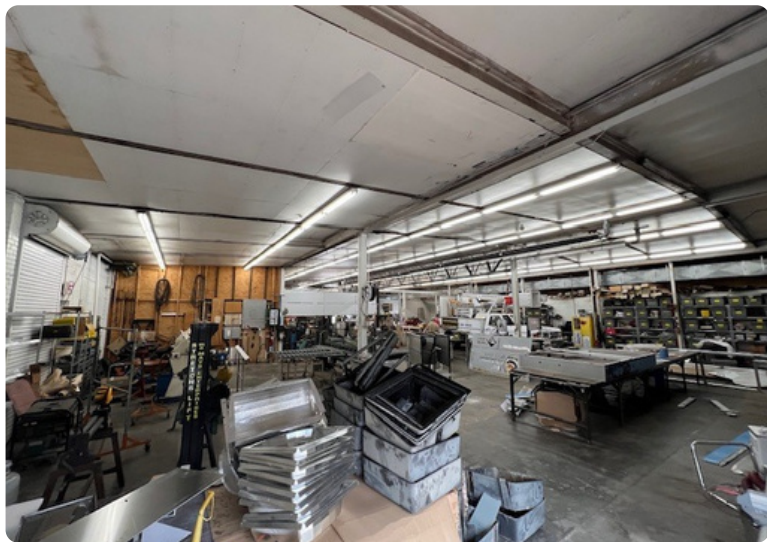


CONTACT INFO

GAVIN MITCHELL
gavin@bhicp.com
(828) 322-1723



PHOTOS



PROPERTY HIGHLIGHTS



14,866 SQ FT TOTAL

8,884 SQ FT WAREHOUSE

5,982 SQ FT OFFICE

VERSATILE STORAGE

120/480v POWER

10' X 12'

DRIVE-IN DOOR

LOADING DOCK

CONTACT INFO

GAVIN MITCHELL

gavin@bhicp.com

(828) 322-1723

