



FOR LEASE | \$7,000/MO
+\$250 water/sewer/landscaping

826 22ND ST PL SE
HICKORY, NC

5,000-square-foot industrial property featuring four dock doors and 16'+ clear height, making it well suited for efficient warehouse operations. The warehouse is equipped with gas unit heaters, while the approximately 2,500-square-foot office area offers central HVAC for year-round comfort. In the climate-controlled office area, there are 10 private offices as well as an additional 3 storage rooms. A \$250 per month fee covers water, sewer, and landscaping services.

Note: Ramp is pictured but will not remain on site.



CONTACT INFO

GAVIN MITCHELL
gavin@bhicp.com
(828) 322-1723



PHOTOS & PROPERTY HIGHLIGHTS



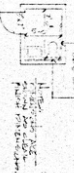
- Four Dock Doors
- 16'+ Clear Height
- Central HVAC in Office
- Gas Unit Heaters in Warehouse



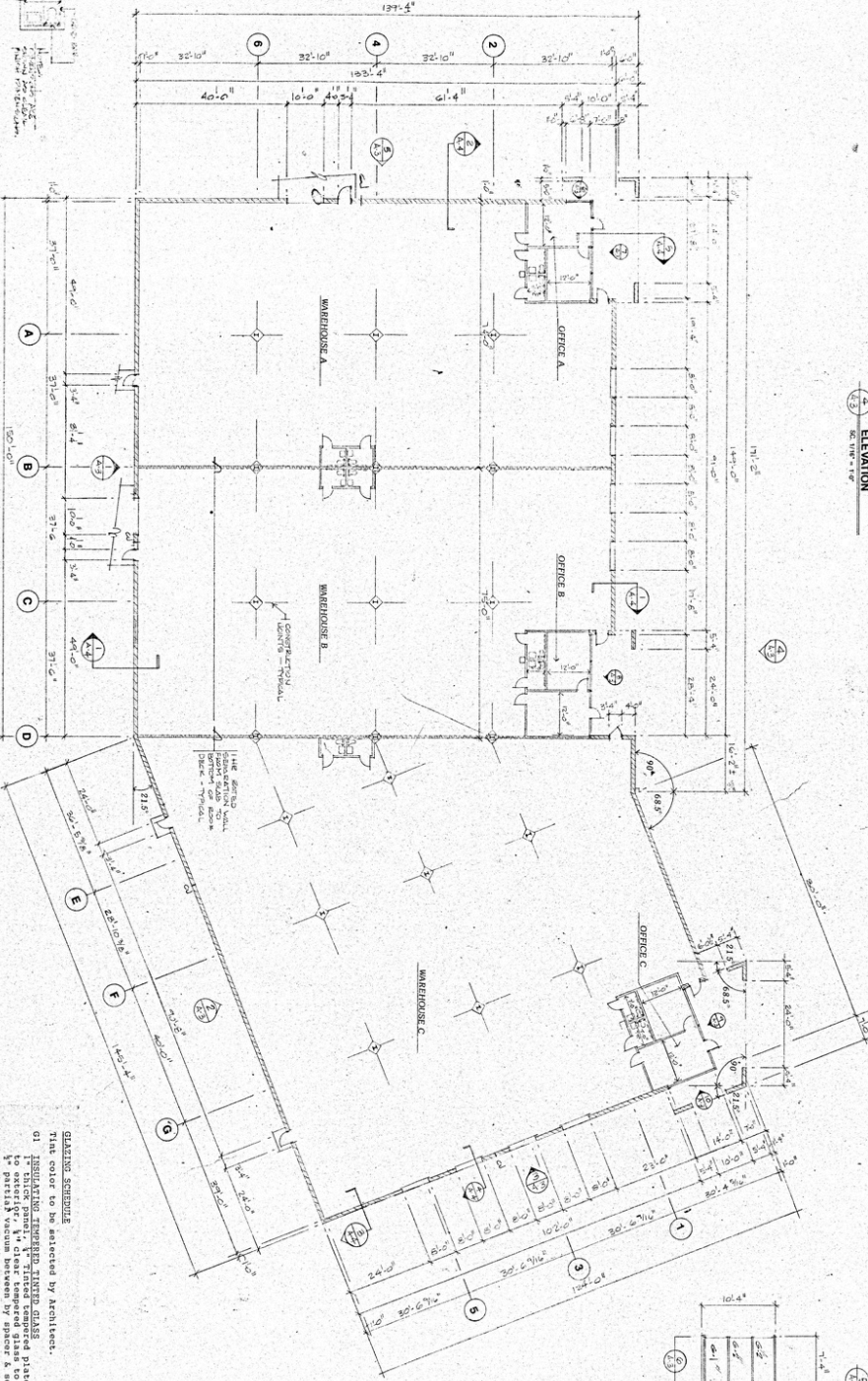
PHOTOS & PROPERTY HIGHLIGHTS



TYPICAL TOILET PLAN
SCALE: 1/8" = 1'-0"

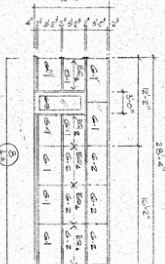
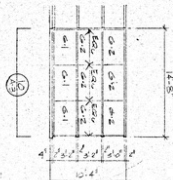


FLOOR PLAN
SCALE: 1/8" = 1'-0"

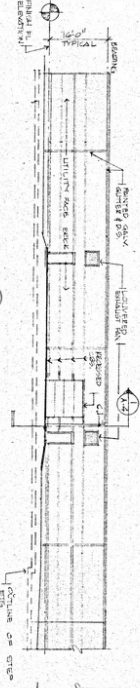


- GLASSING SCHEDULE**
The color to be selected by Architect.
01. Clear tempered glass to interior.
 02. Clear tempered glass to exterior.
 03. Clear tempered glass to exterior.
 04. Clear tempered glass to exterior.
 05. Clear tempered glass to exterior.
 06. Clear tempered glass to exterior.
 07. Clear tempered glass to exterior.
 08. Clear tempered glass to exterior.
 09. Clear tempered glass to exterior.
 10. Clear tempered glass to exterior.
 11. Clear tempered glass to exterior.
 12. Clear tempered glass to exterior.
 13. Clear tempered glass to exterior.
 14. Clear tempered glass to exterior.
 15. Clear tempered glass to exterior.
 16. Clear tempered glass to exterior.
 17. Clear tempered glass to exterior.
 18. Clear tempered glass to exterior.
 19. Clear tempered glass to exterior.
 20. Clear tempered glass to exterior.
 21. Clear tempered glass to exterior.
 22. Clear tempered glass to exterior.
 23. Clear tempered glass to exterior.
 24. Clear tempered glass to exterior.
 25. Clear tempered glass to exterior.
 26. Clear tempered glass to exterior.
 27. Clear tempered glass to exterior.
 28. Clear tempered glass to exterior.
 29. Clear tempered glass to exterior.
 30. Clear tempered glass to exterior.
 31. Clear tempered glass to exterior.
 32. Clear tempered glass to exterior.
 33. Clear tempered glass to exterior.
 34. Clear tempered glass to exterior.
 35. Clear tempered glass to exterior.
 36. Clear tempered glass to exterior.
 37. Clear tempered glass to exterior.
 38. Clear tempered glass to exterior.
 39. Clear tempered glass to exterior.
 40. Clear tempered glass to exterior.
 41. Clear tempered glass to exterior.
 42. Clear tempered glass to exterior.
 43. Clear tempered glass to exterior.
 44. Clear tempered glass to exterior.
 45. Clear tempered glass to exterior.
 46. Clear tempered glass to exterior.
 47. Clear tempered glass to exterior.
 48. Clear tempered glass to exterior.
 49. Clear tempered glass to exterior.
 50. Clear tempered glass to exterior.
 51. Clear tempered glass to exterior.
 52. Clear tempered glass to exterior.
 53. Clear tempered glass to exterior.
 54. Clear tempered glass to exterior.
 55. Clear tempered glass to exterior.
 56. Clear tempered glass to exterior.
 57. Clear tempered glass to exterior.
 58. Clear tempered glass to exterior.
 59. Clear tempered glass to exterior.
 60. Clear tempered glass to exterior.
 61. Clear tempered glass to exterior.
 62. Clear tempered glass to exterior.
 63. Clear tempered glass to exterior.
 64. Clear tempered glass to exterior.
 65. Clear tempered glass to exterior.
 66. Clear tempered glass to exterior.
 67. Clear tempered glass to exterior.
 68. Clear tempered glass to exterior.
 69. Clear tempered glass to exterior.
 70. Clear tempered glass to exterior.
 71. Clear tempered glass to exterior.
 72. Clear tempered glass to exterior.
 73. Clear tempered glass to exterior.
 74. Clear tempered glass to exterior.
 75. Clear tempered glass to exterior.
 76. Clear tempered glass to exterior.
 77. Clear tempered glass to exterior.
 78. Clear tempered glass to exterior.
 79. Clear tempered glass to exterior.
 80. Clear tempered glass to exterior.
 81. Clear tempered glass to exterior.
 82. Clear tempered glass to exterior.
 83. Clear tempered glass to exterior.
 84. Clear tempered glass to exterior.
 85. Clear tempered glass to exterior.
 86. Clear tempered glass to exterior.
 87. Clear tempered glass to exterior.
 88. Clear tempered glass to exterior.
 89. Clear tempered glass to exterior.
 90. Clear tempered glass to exterior.
 91. Clear tempered glass to exterior.
 92. Clear tempered glass to exterior.
 93. Clear tempered glass to exterior.
 94. Clear tempered glass to exterior.
 95. Clear tempered glass to exterior.
 96. Clear tempered glass to exterior.
 97. Clear tempered glass to exterior.
 98. Clear tempered glass to exterior.
 99. Clear tempered glass to exterior.
 100. Clear tempered glass to exterior.

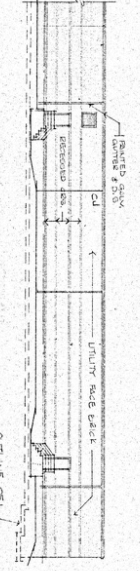
STOREFRONT ELEVATIONS
SCALE: 1/8" = 1'-0"



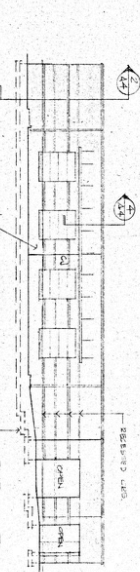
ELEVATION
SCALE: 1/8" = 1'-0"



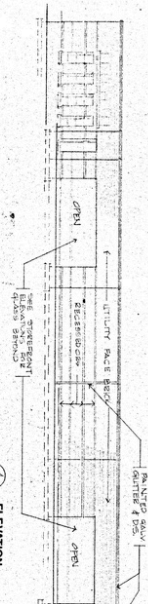
ELEVATION
SCALE: 1/8" = 1'-0"



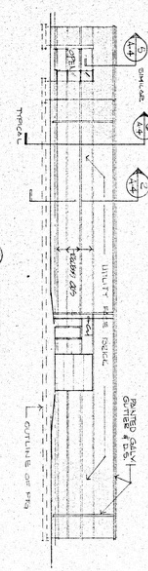
ELEVATION
SCALE: 1/8" = 1'-0"



ELEVATION
SCALE: 1/8" = 1'-0"



ELEVATION
SCALE: 1/8" = 1'-0"



WAREHOUSE PROJECT NO. 5 FOR:

MR. GEORGE BLACKWELDER

HICKORY, NORTH CAROLINA



WM. P. REINHARDT, AIA
ARCHITECT

P.O. BOX 997
NEWTON, NORTH CAROLINA 28658

704/464-2086

A-3

